

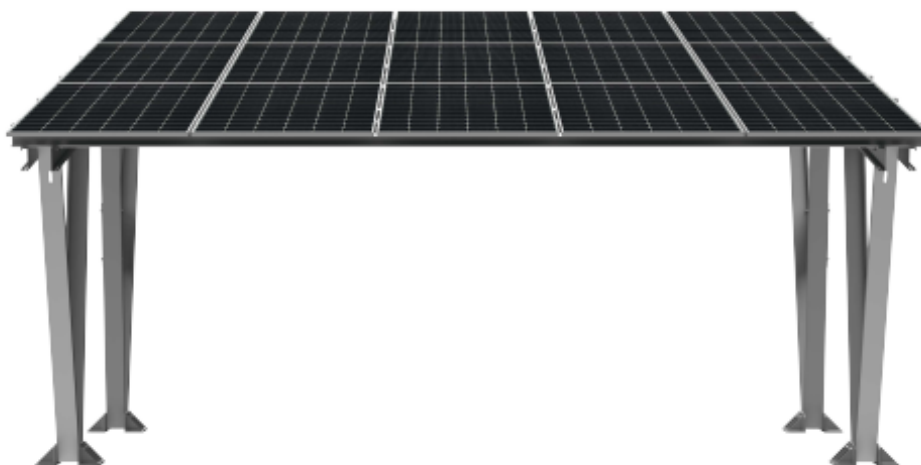
# CARPORT

## CHARACTERISTICS

CARPORT characterized by an unusual, modern design, the photovoltaic structure has a unique design. The built-in mounting plate for the inverter and the modularity of the structure allow for easy installation and the creation of up to two electric vehicle charging points. Specially prepared by the R&D department, the structure has been analyzed for resistance to wind and snow.



- EQUIPPED WITH MOUNTING PLATE FOR INVERTER OR CAR CHARGER
- MODERN DESIGN
- EASY ASSEMBLE
- POSSIBILITY TO PARK TWO CARS
- CHOICE OF COLORS FROM THE RAL PALETTE



DESIGN FOR MODULES WITH DIMENSIONS  
2278x1134mm



KENO Sp. z o.o.  
ul. Daszyńskiego 609  
44-151 Gliwice

☎ +48 32 230 25 71  
✉ [biuro@keno-energy.com](mailto:biuro@keno-energy.com)  
🌐 [www.keno-energy.com](http://www.keno-energy.com)

## SPECIFICATIONS

BASIC TECHNICAL DATA	
Dedicated number of modules	15pcs.
Mounting space for inverter/EV charger	2pcs.
Bolted construction	Yes
Initial preparations	Yes (foundation within the scope of the installer)
Color	Optionally any of the RAL
Wight [mm]	5864
Maximum height [mm]	3176
Minimum height [mm]	2164
Lenght [mm]	5845
Tilt of the structure	10°
Material	Structural steel with zinc-magnesium coating
Weight(kg)	827

